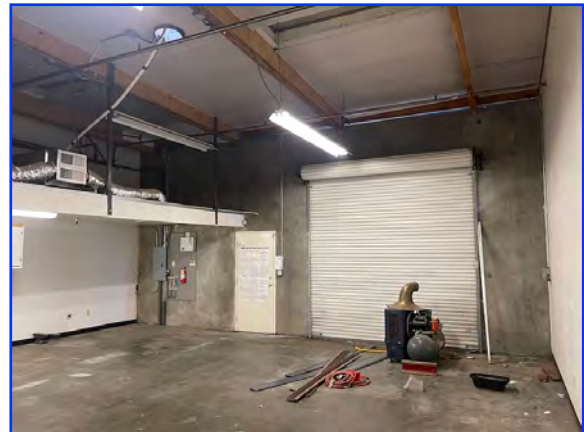


FOR LEASE

1,800± Sq. Ft. Office w/ Warehouse Space



10 N. East Street, Suite 203, Woodland, CA

Zoned Light Industrial/Office Use
Located in Professional Business Condo Complex
Large Open Office Space with Restroom
Open Warehouse with 10' x 10' Roll-up Door
13' Clear Height in Warehouse
Security Cameras on Premises
Includes Water, Sewer & Garbage
Monument Signage

Lease Rate: \$1,800/Month

SHEFFIELD-SALLING PROPERTIES

REAL ESTATE SALES, LEASING & PROPERTY MANAGEMENT

20 N. East Street, Suite 101, Woodland, CA 95776

Phone: (530) 666-5485

Website: www.Sheffield-RealEstate.com

E-Mail: sallingproperties@kathysallingrealtor.com

Listing Agent:

CalBRE:

Phone:

E-Mail:

Bryan Sheffield, Agent

02065645

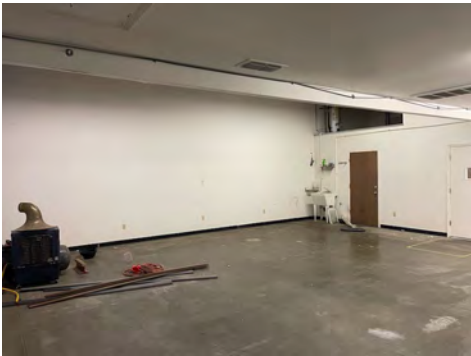
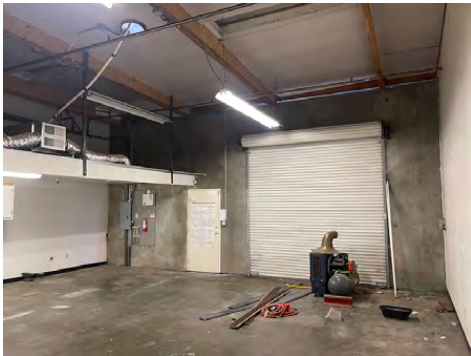
(530) 219-0281

bsheffield100@gmail.com

The information contained herein has been obtained from sources we deem reliable. We cannot, however, assume responsibility for its accuracy.

FOR LEASE

1,800± Sq. Ft. Office w/ Warehouse Space



SHEFFIELD-SALLING PROPERTIES

REAL ESTATE SALES, LEASING & PROPERTY MANAGEMENT

20 N. East Street, Suite 101, Woodland, CA 95776

Phone: (530) 666-5485

Website: www.Sheffield-RealEstate.com

E-Mail: sallingproperties@kathysallingrealtor.com

Listing Agent:

Bryan Sheffield, Agent

CalBRE:

02065645

Phone:

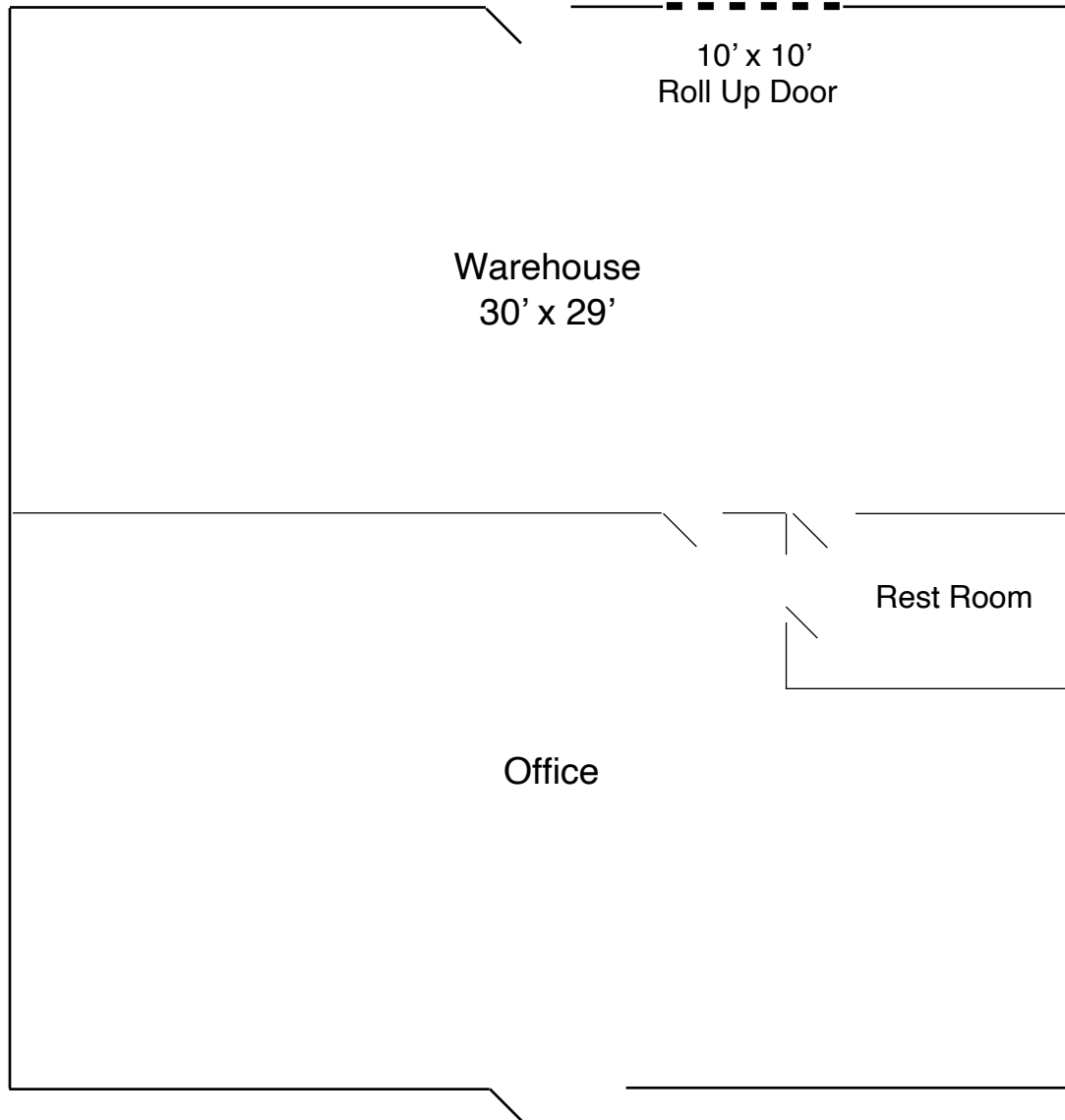
(530) 219-0281

E-Mail:

bsheffield100@gmail.com

The information contained herein has been obtained from sources we deem reliable. We cannot, however, assume responsibility for its accuracy.

***1,800± Sq. Ft. Office w/ Warehouse Space
10 N. East Street, Suite 203 • Woodland, CA***



***Drawing Not To Scale**

SHEFFIELD-SALLING PROPERTIES

REAL ESTATE SALES, LEASING & PROPERTY MANAGEMENT

20 N. East Street, Suite 101, Woodland, CA 95776

Phone: (530) 666-5485

Website: www.Sheffield-RealEstate.com

E-Mail: sallingproperties@kathysallingrealtor.com

Listing Agent: **Bryan Sheffield, Agent**
CalBRE: **02065645**
Phone: **(530) 219-0281**
E-Mail: **bsheffield100@gmail.com**

The information contained herein has been obtained from sources we deem reliable. We cannot, however, assume responsibility for its accuracy.