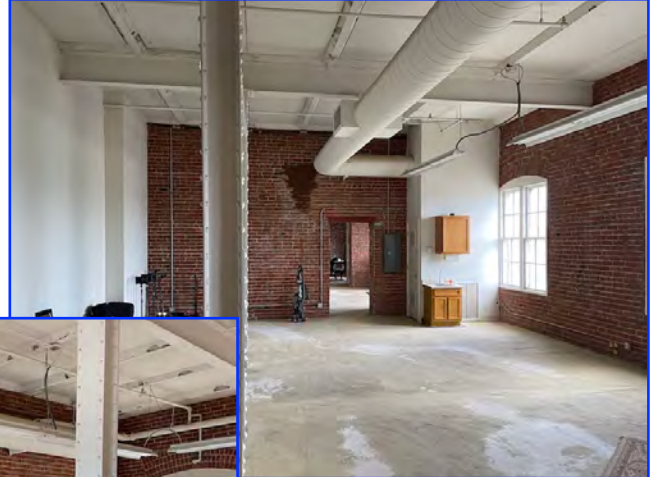


FOR LEASE

1,745± Sq. Ft. Office Space



1059 Court Street, Suites 201-203, Woodland, CA

Upstairs Office Suites of Second Floor
in Historic Global Mill Building
Second Floor Consist of 3 Connecting Offices
Easy walking distance to Yolo County Superior Courthouse
& Yolo County Offices
Easy access to/from I-5 & Hwy 113
Water/Sewer and Garbage Included in Rent

Lease Rate: \$2,000.00 + CAM Fee

SHEFFIELD-SALLING PROPERTIES

REAL ESTATE SALES, LEASING & PROPERTY MANAGEMENT

20 N. East Street, Suite 101, Woodland, CA 95776

Phone: (530) 666-5485

Website: www.Sheffield-RealEstate.com

E-Mail: sallingproperties@kathysallingrealtor.com

Listing Agent:

Bryan Sheffield, Agent

CalBRE:

02065645

Phone:

(530) 219-0281

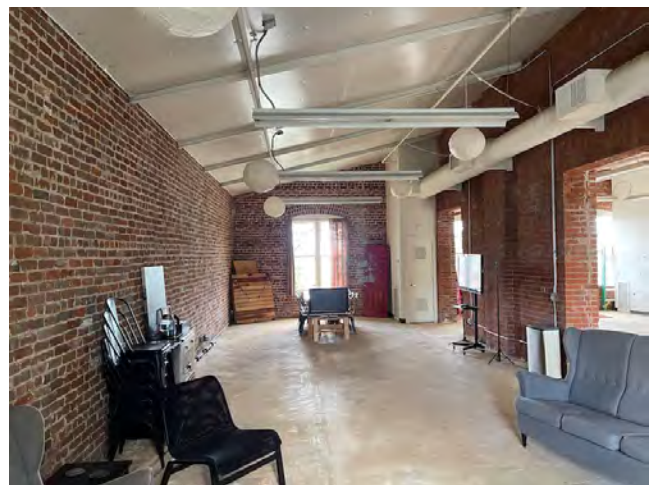
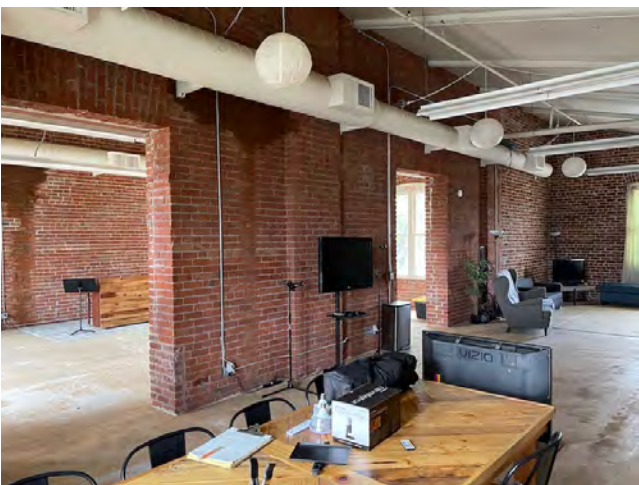
E-Mail:

bsheffield100@gmail.com

The information contained herein has been obtained from sources we deem reliable. We cannot, however, assume responsibility for its accuracy.

1,745± Sq. Ft. Office Space

1059 Court Street, Suites 201-203 • Woodland, CA



SHEFFIELD-SALLING PROPERTIES

REAL ESTATE SALES, LEASING & PROPERTY MANAGEMENT

20 N. East Street, Suite 101, Woodland, CA 95776

Phone: (530) 666-5485

Website: www.Sheffield-RealEstate.com

E-Mail: sallingproperties@kathysallingrealtor.com

The information contained herein has been obtained from sources we deem reliable. We cannot, however, assume responsibility for its accuracy.

Listing Agent:

CalBRE:

Phone:

E-Mail:

Bryan Sheffield, Agent

02065645

(530) 219-0281

bsheffield100@gmail.com