

# FOR LEASE

*180± Sq. Ft. Office / Retail Space*



*91 W. Main Street Suite E, Woodland, CA*

Located in well established retail complex  
Small private office  
Private parking lot  
PG&E, water/sewer and garbage included in rent  
Monument Signage

**Lease Rate: \$360.00/Month**

## **S**SHEFFIELD-**S**SALLING **P**ROPERTIES

COMMERCIAL, INDUSTRIAL AND RESIDENTIAL SALES  
AND PROPERTY MANAGEMENT

20 N. East Street, Suite 101, Woodland, CA 95776

Phone: (530) 666-5485 Fax: (530) 666-1244

Website: [www.Sheffield-RealEstate.com](http://www.Sheffield-RealEstate.com)

Listing Agent:

CalBRE:

E-Mail:

**Bryan Sheffield, Agent**

**02065645**

**[bsheffield100@gmail.com](mailto:bsheffield100@gmail.com)**

The information contained herein has been obtained from sources we deem reliable. We cannot, however, assume responsibility for its accuracy.

# *180± Sq. Ft. Office / Retail Space*

## *91 W. Main Street, Suite E • Woodland, CA*



## **S**HEFFIELD-**S**ALLING **P**ROPERTIES

COMMERCIAL, INDUSTRIAL AND RESIDENTIAL SALES  
AND PROPERTY MANAGEMENT

20 N. East Street, Suite 101, Woodland, CA 95776

Phone: (530) 666-5485 Fax: (530) 666-1244

Website: [www.Sheffield-RealEstate.com](http://www.Sheffield-RealEstate.com)

Listing Agent:

**Bryan Sheffield, Agent**

CalBRE:

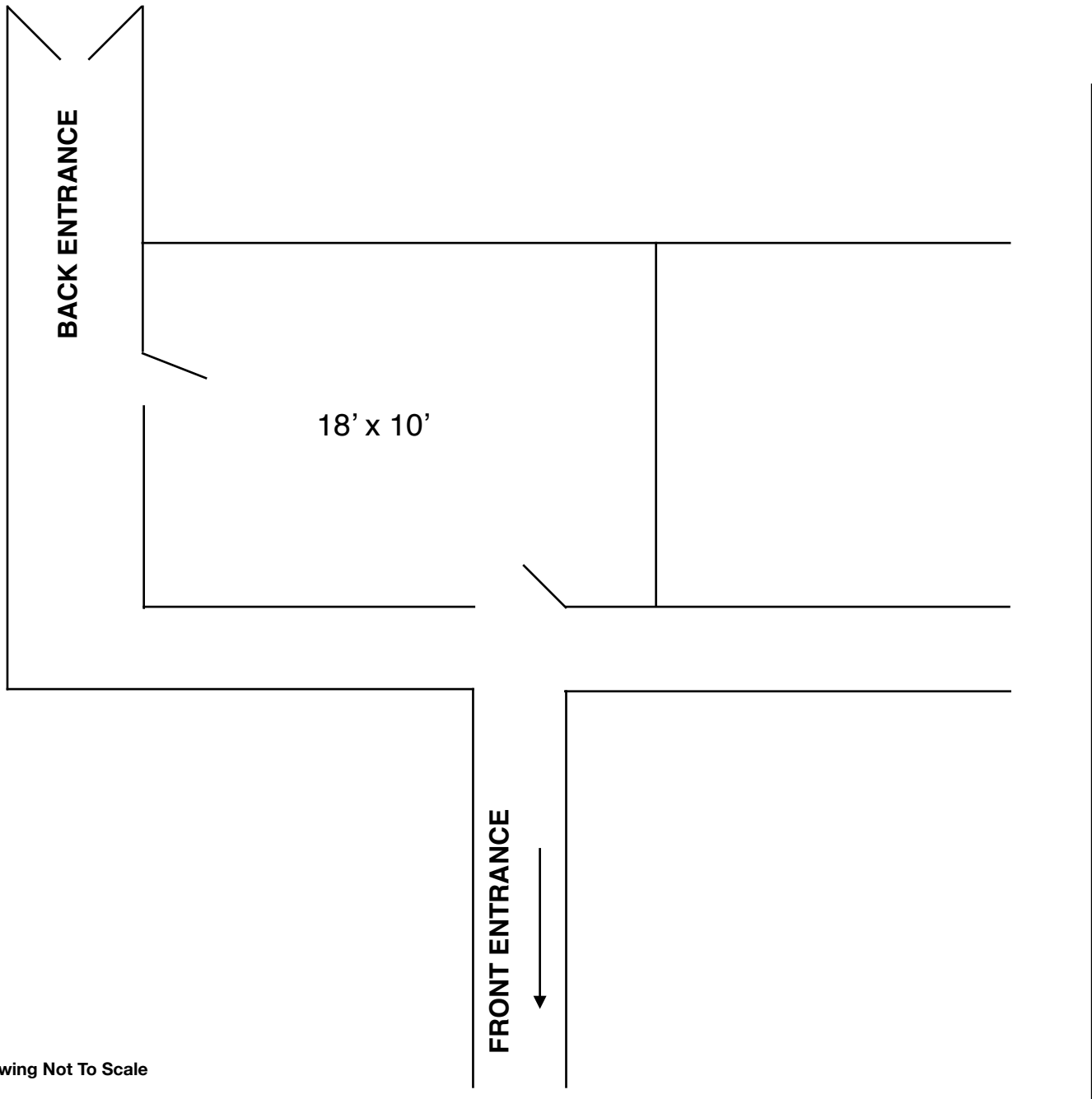
**02065645**

E-Mail:

**bsheffield100@gmail.com**

The information contained herein has been obtained from sources we deem reliable. We cannot, however, assume responsibility for its accuracy.

*180± Sq. Ft. Office / Retail Space*  
*91 W. Main Street, Suite E • Woodland, CA*



\*Drawing Not To Scale

**SHEFFIELD-SALLING PROPERTIES**

COMMERCIAL, INDUSTRIAL AND RESIDENTIAL SALES  
AND PROPERTY MANAGEMENT

20 N. East Street, Suite 101, Woodland, CA 95776

Phone: (530) 666-5485 Fax: (530) 666-1244

Website: [www.Sheffield-RealEstate.com](http://www.Sheffield-RealEstate.com)

Listing Agent:

**Bryan Sheffield, Agent**

CalBRE:

**02065645**

E-Mail:

**bsheffield100@gmail.com**

The information contained herein has been obtained from sources we deem reliable. We cannot, however, assume responsibility for its accuracy.