

FOR LEASE

2,227± Sq. Ft. Quality Office Space



250 W. Main Street, Suite 200, Woodland, CA

Features:

- 2nd Floor Office Suite
- All Spaces Built-Out
- 4 Restrooms (2 Upstairs & 2 Downstairs)
 - Great Location on West Side of Town
 - Easy Access from Main or Court Street
 - 48 Parking Spaces in Complex
 - Nicely Landscaped
 - Elevator Access to 2nd Floor

Rent Includes:

- Utilities, Water/Sewer, Garbage, Landscaping and Janitorial Service (5d/wk)

Lease Rate: \$3,897.00/Month

SHEFFIELD-**S**ALLING **P**ROPERTIES

COMMERCIAL, INDUSTRIAL AND RESIDENTIAL SALES
AND PROPERTY MANAGEMENT

20 N. East Street, Suite 101, Woodland, CA 95776

Phone: (530) 666-5485 Fax: (530) 666-1244

Website: www.Sheffield-RealEstate.com

Listing Agent:

CalBRE:

E-Mail:

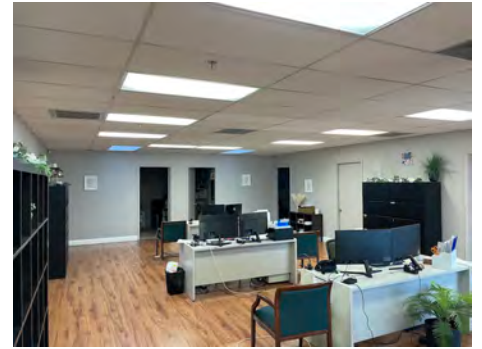
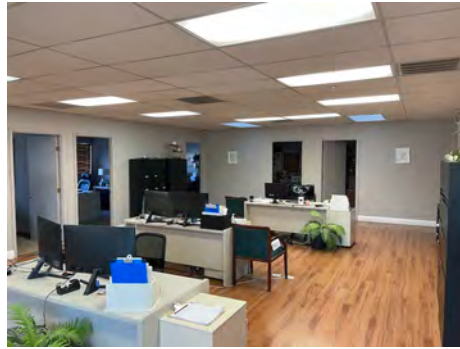
Bryan Sheffield, Agent

02065645

bsheffield100@gmail.com

2,227± Sq. Ft. Quality Office Space

250 W. Main Street, Suite 200 • Woodland, CA



SHEFFIELD-SALLING PROPERTIES

COMMERCIAL, INDUSTRIAL AND RESIDENTIAL SALES
AND PROPERTY MANAGEMENT

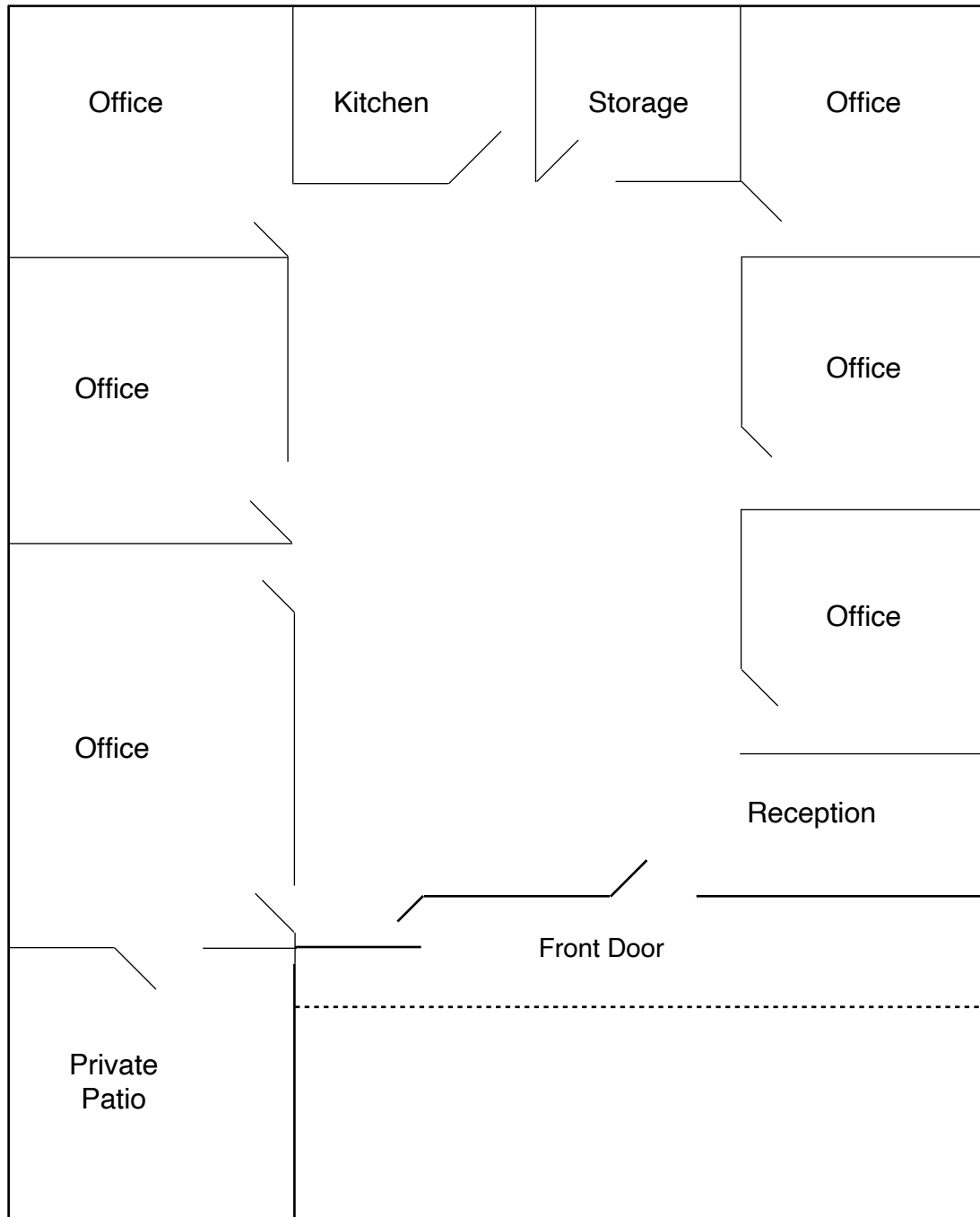
20 N. East Street, Suite 101, Woodland, CA 95776
Phone: (530) 666-5485 Fax: (530) 666-1244
Website: www.Sheffield-RealEstate.com

Listing Agent: **Bryan Sheffield, Agent**
CalBRE: **02065645**
E-Mail: **bsheffield100@gmail.com**

The information contained herein has been obtained from sources we deem reliable. We cannot, however, assume responsibility for its accuracy.

2,227± Sq. Ft. Quality Office Space

250 W. Main Street, Suite 200 • Woodland, CA



*Drawing Not To Scale

SHEFFIELD-SALLING PROPERTIES

COMMERCIAL, INDUSTRIAL AND RESIDENTIAL SALES
AND PROPERTY MANAGEMENT

20 N. East Street, Suite 101, Woodland, CA 95776

Phone: (530) 666-5485 Fax: (530) 666-1244

Website: www.Sheffield-RealEstate.com

Listing Agent:

Bryan Sheffield, Agent

CalBRE:

02065645

E-Mail:

bsheffield100@gmail.com

The information contained herein has been obtained from sources we deem reliable. We cannot, however, assume responsibility for its accuracy.