

FOR LEASE

1,633± Sq. Ft. Office Space



216 N. East Street, Woodland, CA

Reception area, Small Private offices

Large Open Office

Private Restroom

Yard Not Included In Lease (office only)

Security System on Site with Monitored Cameras

Water/Sewer included in rent

Tenant to Pay PG&E and Garbage

Lease Rate: \$1,400/Month

SHEFFIELD-SALLING PROPERTIES
COMMERCIAL, INDUSTRIAL AND RESIDENTIAL SALES
AND PROPERTY MANAGEMENT

20 N. East Street, Suite 101, Woodland, CA 95776

Phone: (530) 666-5485 Fax: (530) 666-1244

Website: www.Sheffield-RealEstate.com

Listing Agent:

CalBRE:

E-Mail:

Bryan Sheffield, Agent

02065645

bsheffield100@gmail.com

The information contained herein has been obtained from sources we deem reliable. We cannot, however, assume responsibility for its accuracy.

1,633± Sq. Ft. Office Space

216 N. East Street • Woodland, CA



SHEFFIELD-**S**ALLING **P**ROPERTIES

COMMERCIAL, INDUSTRIAL AND RESIDENTIAL SALES
AND PROPERTY MANAGEMENT

20 N. East Street, Suite 101, Woodland, CA 95776

Phone: (530) 666-5485 Fax: (530) 666-1244

Website: www.Sheffield-RealEstate.com

Listing Agent:

Bryan Sheffield, Agent

CalBRE:

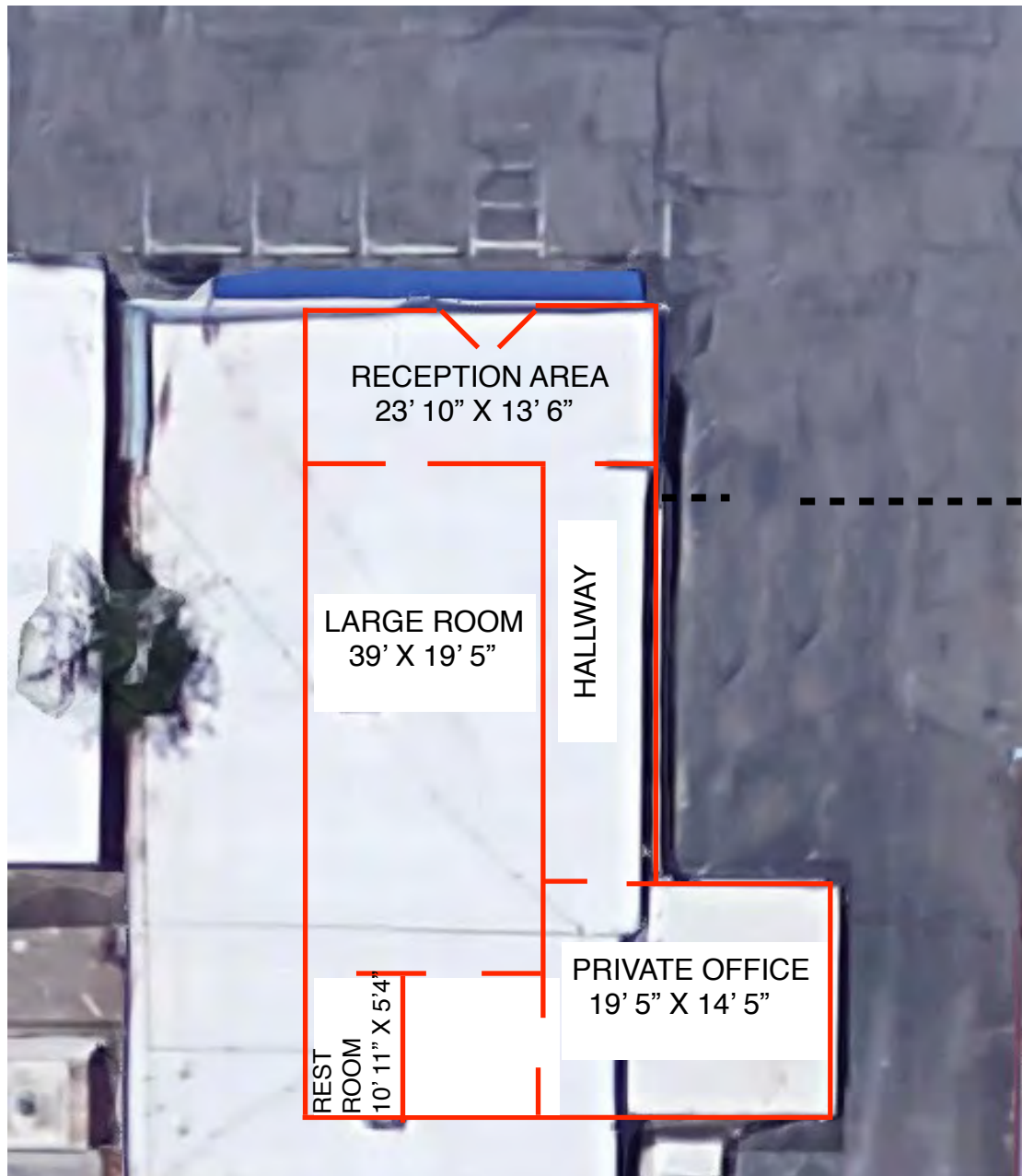
02065645

E-Mail:

bsheffield100@gmail.com

The information contained herein has been obtained from sources we deem reliable. We cannot, however, assume responsibility for its accuracy.

1,633± Sq. Ft. Office Space
216 N. East Street • Woodland, CA



*Drawing Not To Scale

SHEFFIELD-SALLING PROPERTIES
COMMERCIAL, INDUSTRIAL AND RESIDENTIAL SALES
AND PROPERTY MANAGEMENT

20 N. East Street, Suite 101, Woodland, CA 95776
Phone: (530) 666-5485 Fax: (530) 666-1244
Website: www.Sheffield-RealEstate.com

Listing Agent: **Bryan Sheffield, Agent**
CalBRE: **02065645**
E-Mail: **bsheffield100@gmail.com**

The information contained herein has been obtained from sources we deem reliable. We cannot, however, assume responsibility for its accuracy.