

# FOR LEASE

*4,290± Sq. Ft. Retail Space on 1.15 ac*



*617 West Street • Woodland, CA*

Located on high traffic main thoroughfare  
Building has large retail space  
One common office, one private office and break room  
800± sq. ft. storage shed  
Paved parking lot with 30 spaces plus street parking  
Partially shaded fenced gravel yard  
Currently a working nursery

**Lease Rate: \$4,200/Month**

## **S**HEFFIELD **R**EAL **E**STATE

COMMERCIAL/INDUSTRIAL PROPERTIES  
20 N. East Street, Suite 101, Woodland, CA 95776  
Phone: (530) 666-5485 Fax: (530) 666-1244  
Website: [www.Sheffield-RealEstate.com](http://www.Sheffield-RealEstate.com)

Listing Agent: **Tom Green, Agent**  
CalBRE: **01710371**  
Phone: **530-713-9221**  
E-Mail: **[tomgreen@pacbell.net](mailto:tomgreen@pacbell.net)**

The information contained herein has been obtained from sources we deem reliable. We cannot, however, assume responsibility for its accuracy.

# 4,290± Sq. Ft. Retail Space on 1.15 ac 617 West Street • Woodland, CA



## SHEFFIELD REAL ESTATE

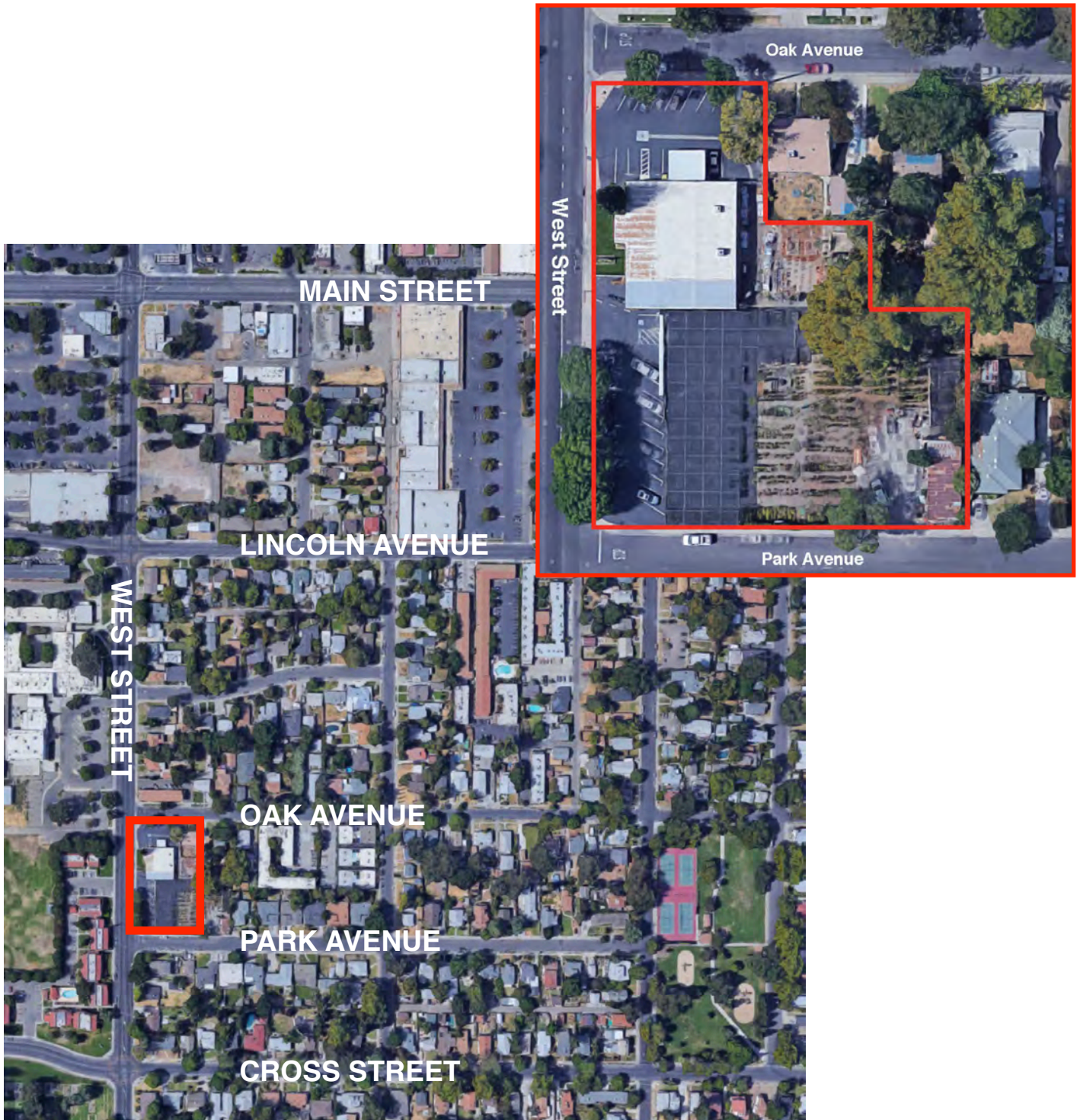
COMMERCIAL/INDUSTRIAL PROPERTIES  
20 N. East Street, Suite 101, Woodland, CA 95776  
Phone: (530) 666-5485 Fax: (530) 666-1244  
Website: [www.Sheffield-RealEstate.com](http://www.Sheffield-RealEstate.com)

The information contained herein has been obtained from sources we deem reliable. We cannot, however, assume responsibility for its accuracy.

Listing Agent: **Tom Green, Agent**  
CalBRE: **01710371**  
Phone: **530-713-9221**  
E-Mail: **[tomgreen@pacbell.net](mailto:tomgreen@pacbell.net)**



# 4,290± Sq. Ft. Retail Space on 1.15 ac 617 West Street • Woodland, CA



## SHEFFIELD REAL ESTATE

COMMERCIAL/INDUSTRIAL PROPERTIES  
20 N. East Street, Suite 101, Woodland, CA 95776  
Phone: (530) 666-5485 Fax: (530) 666-1244  
Website: [www.Sheffield-RealEstate.com](http://www.Sheffield-RealEstate.com)

The information contained herein has been obtained from sources we deem reliable. We cannot, however, assume responsibility for its accuracy.

Listing Agent: **Tom Green, Agent**  
CalBRE: **01710371**  
Phone: **530-713-9221**  
E-Mail: **[tomgreen@pacbell.net](mailto:tomgreen@pacbell.net)**