

FOR LEASE

3,026± Sq. Ft. Industrial Condominium



20 N. East Street, Suite 104, Woodland, CA

Large open floor plan with high ceilings
One private office, break room and restroom

Great natural light

Adequate parking

Water/Sewer and garbage included in rent

Monument Signage

AVAILABLE 09/01/2020

Lease Rate: \$3,800/Month

SHEFFIELD **R**EAL **E**STATE

COMMERCIAL/INDUSTRIAL PROPERTIES

20 N. East Street, Suite 101, Woodland, CA 95776

Phone: (530) 666-5485 Fax: (530) 666-1244

Website: www.Sheffield-RealEstate.com

Listing Agent:

CalBRE:

E-Mail:

Wally Sheffield, Broker

01329897

sheffieldreca@gmail.com

The information contained herein has been obtained from sources we deem reliable. We cannot, however, assume responsibility for its accuracy.

3,026± Sq. Ft. Industrial Condominium

20 N. East Street, Suite 104 • Woodland, CA



SHEFFIELD REAL ESTATE

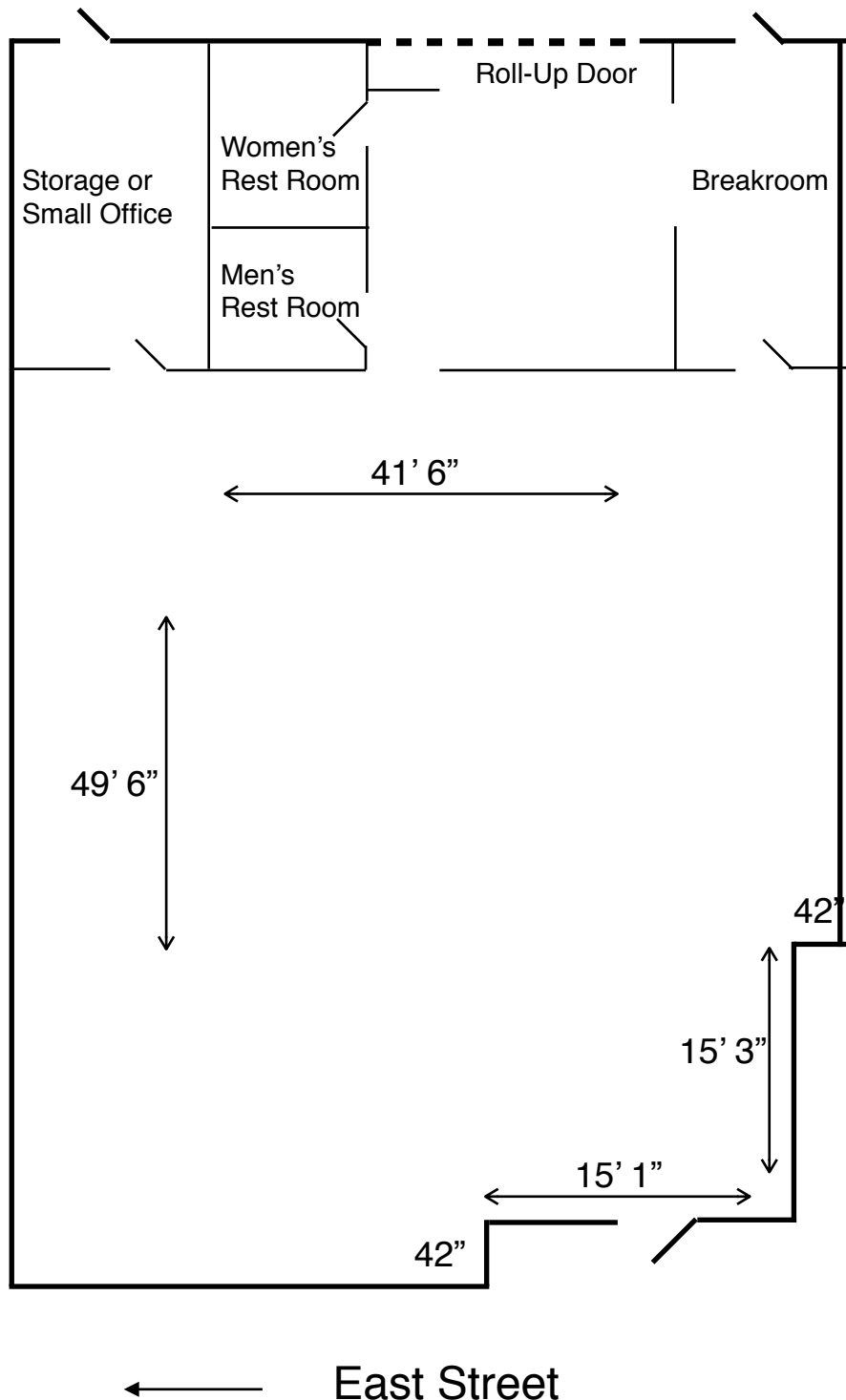
COMMERCIAL/INDUSTRIAL PROPERTIES
20 N. East Street, Suite 101, Woodland, CA 95776
Phone: (530) 666-5485 Fax: (530) 666-1244
Website: www.Sheffield-RealEstate.com

Listing Agent: **Wally Sheffield, Broker**
CalBRE: **01329897**
E-Mail: **sheffieldreca@gmail.com**

The information contained herein has been obtained from sources we deem reliable. We cannot, however, assume responsibility for its accuracy.

3,026± Sq. Ft. Industrial Condominium

20 N. East Street, Suite 104 • Woodland, CA



SHEFFIELD REAL ESTATE

COMMERCIAL/INDUSTRIAL PROPERTIES
20 N. East Street, Suite 101, Woodland, CA 95776
Phone: (530) 666-5485 Fax: (530) 666-1244
Website: www.Sheffield-RealEstate.com

Listing Agent: **Wally Sheffield, Broker**
CalBRE: **01329897**
E-Mail: sheffieldreca@gmail.com

The information contained herein has been obtained from sources we deem reliable. We cannot, however, assume responsibility for its accuracy.