

FOR LEASE

2,088± Sq. Ft. Medical, Dental or Executive Offices



255 W. Court Street, Suite D, Woodland, CA

Beautiful Office/Dental/Medical Space
Located in Executive Park Complex
7 Private Offices or Exam Rooms
Waiting Room, Reception with 2 Work / Storage Areas
Lab Area, Kitchen/Break Room and 2 Private Restroom
Private Parking Lot
Tenant to pay PG&E and Water/Sewer
Garbage included in Rent
Monument Signage

AVAILABLE DECEMBER 1, 2020

Lease Rate: \$3,300.00/Month

SHEFFIELD **R**EAL **E**STATE

COMMERCIAL/INDUSTRIAL PROPERTIES

20 N. East Street, Suite 101, Woodland, CA 95776

Phone: (530) 666-5485 Fax: (530) 666-1244

Website: www.Sheffield-RealEstate.com

Listing Agent:

CalBRE:

E-Mail:

Wally Sheffield, Broker

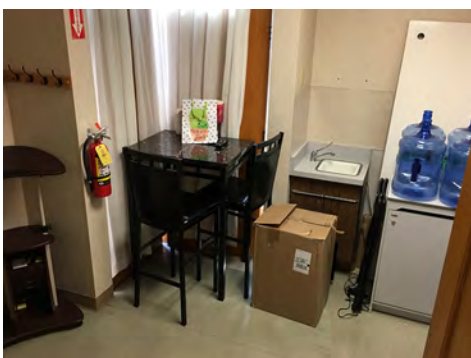
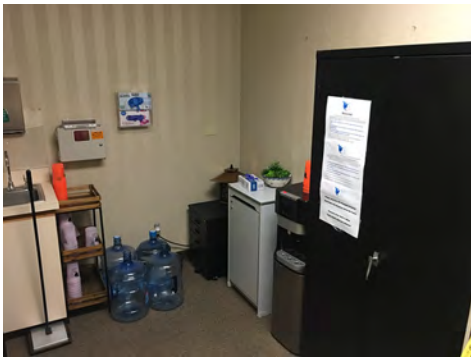
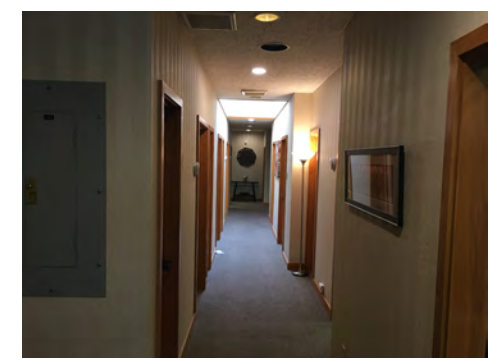
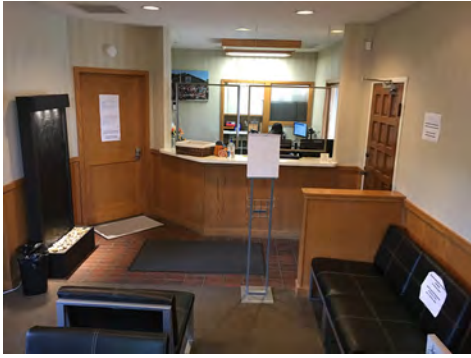
01329897

sheffieldreca@gmail.com

The information contained herein has been obtained from sources we deem reliable. We cannot, however, assume responsibility for its accuracy.

2,088± Sq. Ft. Medical, Dental or Executive Office

255 W. Court Street, Suite D • Woodland, CA



SHEFFIELD REAL ESTATE

COMMERCIAL/INDUSTRIAL PROPERTIES

20 N. East Street, Suite 101, Woodland, CA 95776

Phone: (530) 666-5485 Fax: (530) 666-1244

Website: www.Sheffield-RealEstate.com

Listing Agent:

CalBRE:

E-Mail:

Wally Sheffield, Broker

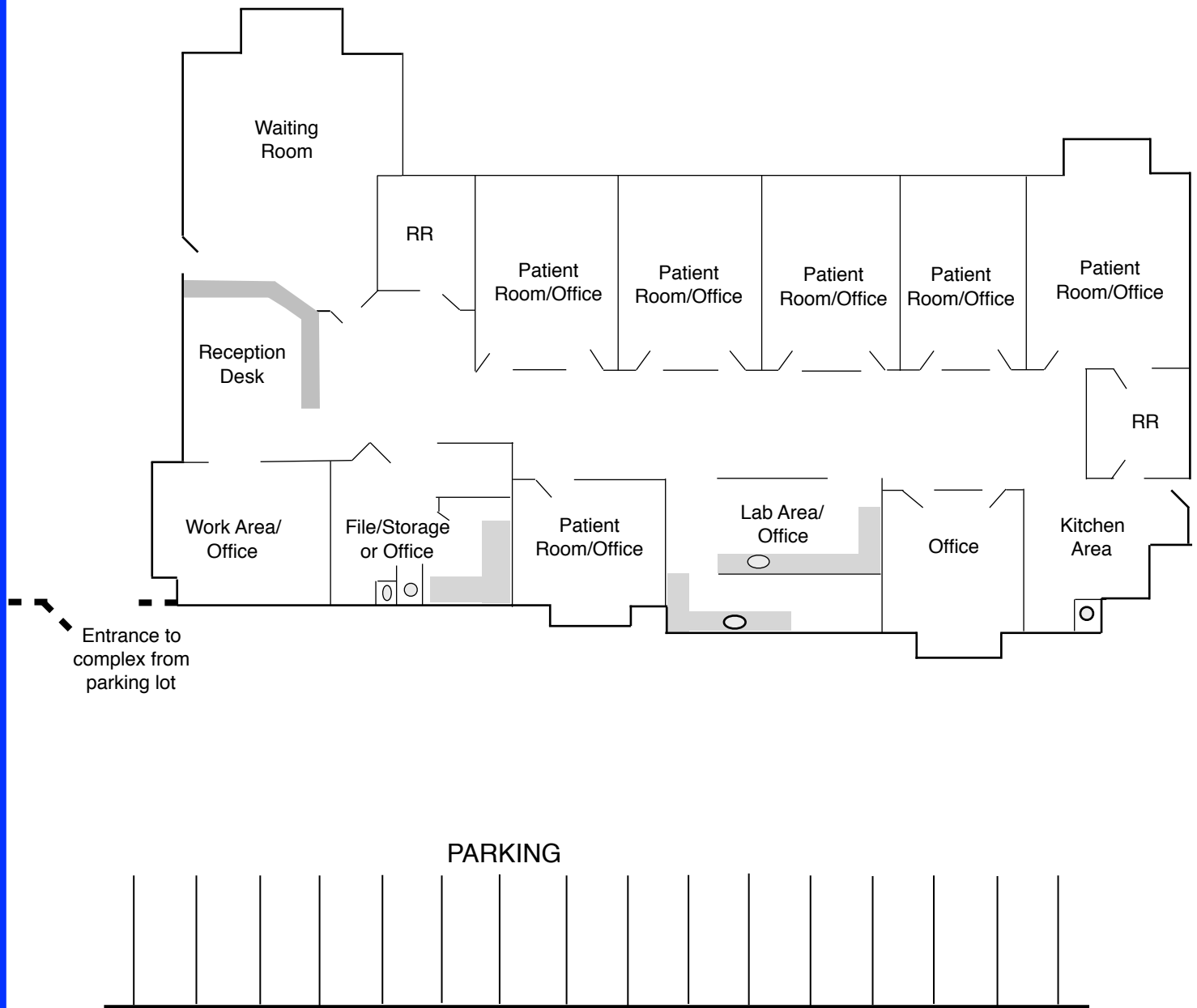
01329897

sheffieldreca@gmail.com

The information contained herein has been obtained from sources we deem reliable. We cannot, however, assume responsibility for its accuracy.

2,088± Sq. Ft. Medical, Dental or Executive Office

255 W. Court Street, Suite D • Woodland, CA



SHEFFIELD REAL ESTATE

COMMERCIAL/INDUSTRIAL PROPERTIES

20 N. East Street, Suite 101, Woodland, CA 95776

Phone: (530) 666-5485 Fax: (530) 666-1244

Website: www.Sheffield-RealEstate.com

Listing Agent:

CalBRE:

E-Mail:

Wally Sheffield, Broker

01329897

sheffieldreca@gmail.com

The information contained herein has been obtained from sources we deem reliable. We cannot, however, assume responsibility for its accuracy.