

FOR LEASE

845± Sq. Ft. Office Space



433 2nd Street, Suite 101B • Woodland, CA

Located in the Garden Court Building
One block south of Main Street
Walking distance to restaurants and shopping
Close to Yolo County Superior Courthouse & Yolo County Offices
Easy access to/from I-5 & Hwy 113
Zoning: Central Business District (CBD)
Lessor pays water/sewer and garbage
Tenant to pay Landlord \$280/mo PG&E

Lease Rate: \$1,200.00/mo

SHEFFIELD **R**EAL **E**STATE

COMMERCIAL/INDUSTRIAL PROPERTIES

20 N. East Street, Suite 101, Woodland, CA 95776

Phone: (530) 666-5485 Fax: (530) 666-1244

Website: www.Sheffield-RealEstate.com

Listing Agent:

CalBRE:

E-Mail:

Wally Sheffield, Broker

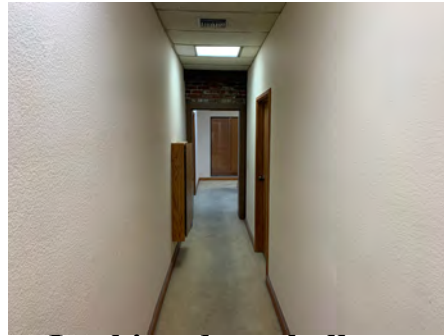
01329897

sheffieldreca@gmail.com

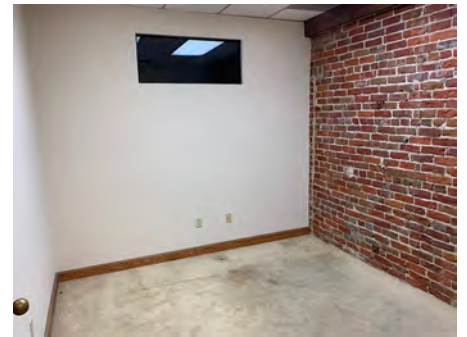
The information contained herein has been obtained from sources we deem reliable. We cannot, however, assume responsibility for its accuracy.

845± Sq. Ft. Office Space

433 Second Street, Suite 101B • Woodland, CA



Looking down hallway from main entry door



Office #1



Office #1



Office #2



Office #2



Office #3



Office #3



Office #3



Office #3



Office #4



Office #4

SHEFFIELD REAL ESTATE

COMMERCIAL/INDUSTRIAL PROPERTIES

20 N. East Street, Suite 101, Woodland, CA 95776

Phone: (530) 666-5485 Fax: (530) 666-1244

Website: www.Sheffield-RealEstate.com

Listing Agent:

CalBRE:

E-Mail:

Wally Sheffield, Broker

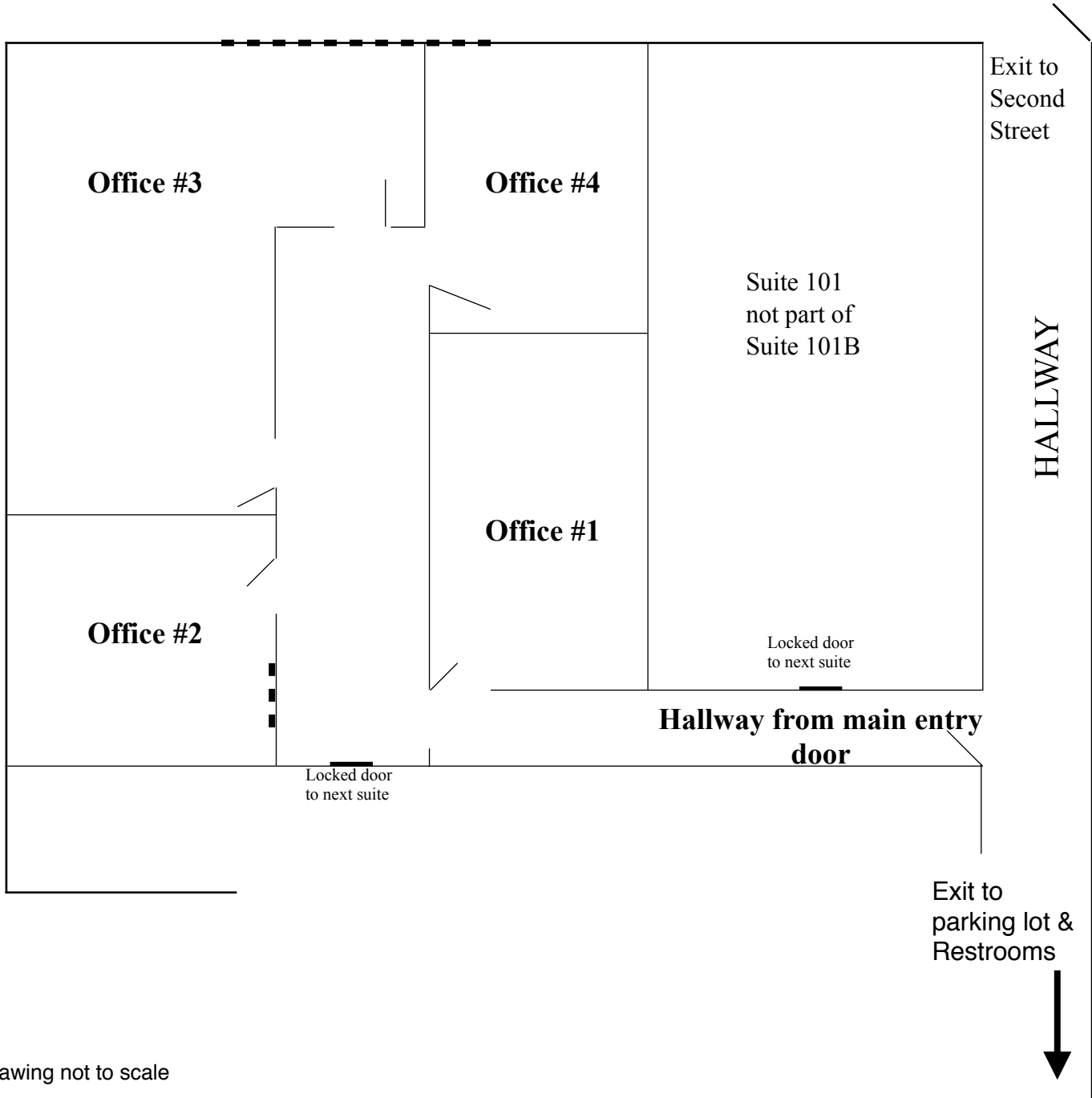
01329897

sheffieldreca@gmail.com

The information contained herein has been obtained from sources we deem reliable. We cannot, however, assume responsibility for its accuracy.

845± Sq. Ft. Office Space
433 Second Street, Suite 101B • Woodland, CA

Second Street



*Drawing not to scale

SHEFFIELD REAL ESTATE

COMMERCIAL/INDUSTRIAL PROPERTIES
20 N. East Street, Suite 101, Woodland, CA 95776
Phone: (530) 666-5485 Fax: (530) 666-1244
Website: www.Sheffield-RealEstate.com

Listing Agent: **Wally Sheffield, Broker**
CalBRE: **01329897**
E-Mail: sheffieldreca@gmail.com

The information contained herein has been obtained from sources we deem reliable. We cannot, however, assume responsibility for its accuracy.