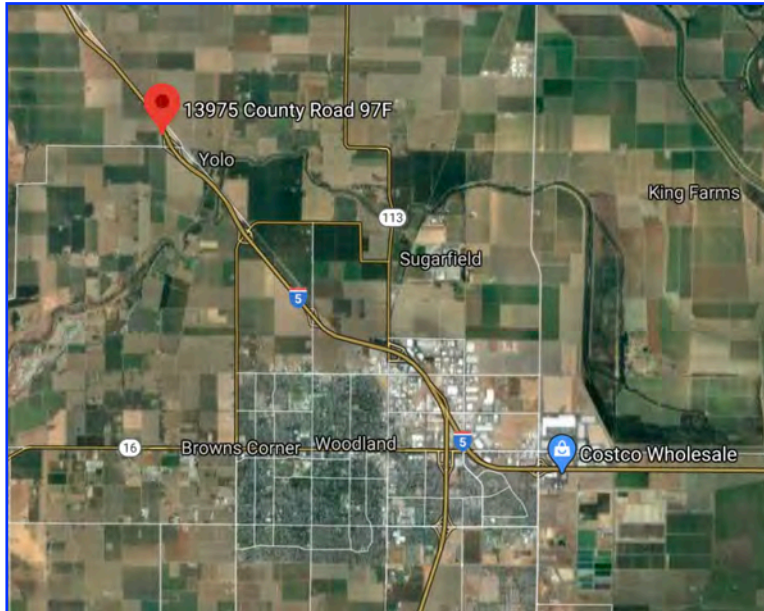


FOR LEASE

2± Acres with 1,300± Sq. Ft. Office



13975 Co. Road 97-F • Yolo, CA

1,300± Office on 2± Acres
Great Location in Country
Just off I-5 On/Off Ramp and Road 17
Fenced, gated & graveled yard

Lease Rate: \$8,000.00/Month

SHEFFIELD **R**EAL **E**STATE

COMMERCIAL/INDUSTRIAL PROPERTIES

20 N. East Street, Suite 101, Woodland, CA 95776

Phone: (530) 666-5485 Fax: (530) 666-1244

Website: www.Sheffield-RealEstate.com

Listing Agent:

CalBRE:

E-Mail:

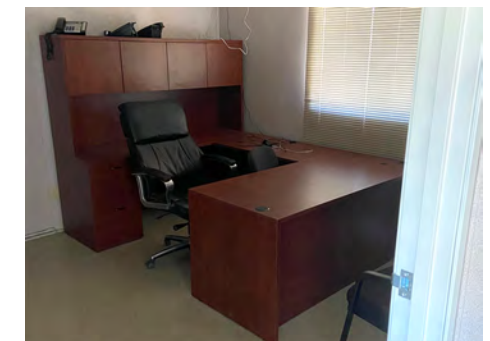
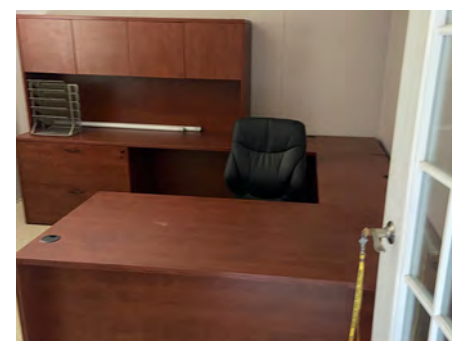
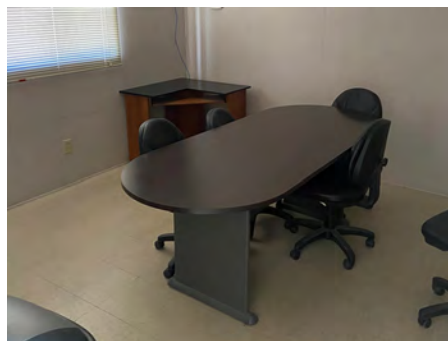
Wally Sheffield, Broker

01329897

sheffieldreca@gmail.com

The information contained herein has been obtained from sources we deem reliable. We cannot, however, assume responsibility for its accuracy.

2± Acres with 1,300± Sq. Ft. Office *13975 County Road 97F • Yolo, CA*



SHEFFIELD **R**EAL **E**STATE

COMMERCIAL/INDUSTRIAL PROPERTIES

20 N. East Street, Suite 101, Woodland, CA 95776

Phone: (530) 666-5485 Fax: (530) 666-1244

Website: www.Sheffield-RealEstate.com

Listing Agent:

CalBRE:

E-Mail:

Wally Sheffield, Broker

01329897

sheffieldreca@gmail.com

The information contained herein has been obtained from sources we deem reliable. We cannot, however, assume responsibility for its accuracy.

2± Acres with 1,300± Sq. Ft. Office *13975 County Road 97F • Yolo, CA*



SHEFFIELD **R**EAL **E**STATE

COMMERCIAL/INDUSTRIAL PROPERTIES

20 N. East Street, Suite 101, Woodland, CA 95776

Phone: (530) 666-5485 Fax: (530) 666-1244

Website: www.Sheffield-RealEstate.com

Listing Agent:

CalBRE:

E-Mail:

Wally Sheffield, Broker

01329897

sheffieldreca@gmail.com

The information contained herein has been obtained from sources we deem reliable. We cannot, however, assume responsibility for its accuracy.