

FOR SALE

51± ACRE PARCEL

APN: 041-030-013-000

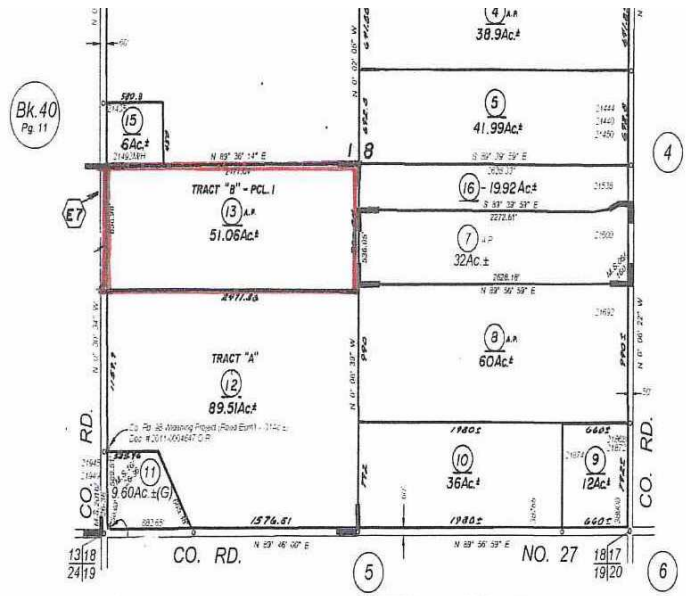


40 Acres Class 1 Soil
11 Acres Class 2 Soil

Currently leased to
Syngenta Seeds, Inc.

Lease Expiring: December 31, 2017

Parcel is in the Williamson Act



Asking Price: \$1,275,000.00

SHEFFIELD REAL ESTATE

COMMERCIAL/INDUSTRIAL PROPERTIES

20 N. East Street, Suite 101, Woodland, CA 95776

E-Mail: SheffieldRE@pacbell.net

Phone: (530) 666-5485 Fax: (530) 666-1244

Website: www.Sheffield-RealEstate.com

The information contained herein has been obtained from sources we deem reliable. We cannot, however, assume responsibility for its accuracy.

Listing Agent: **Wally Sheffield, Broker**

E-Mail: sheffieldre@pacbell.net

CalBRE Lic: 01329897