

# FOR SALE

**1101 Lincoln Avenue • Woodland, CA**  
(Assessor's Parcel #066-122-002)



**Many possibilities for this corner location!**

**Zoned Central Business District**

**Walking Distance to Superior Courthouse  
and Downtown**

**26,607± Sq. Ft. on 0.61± Acres**

**\$645,000.00**

## **SHEFFIELD REAL ESTATE**

**COMMERCIAL/INDUSTRIAL PROPERTIES**

20 N. East Street, Suite 101, Woodland, CA 95776

E-Mail: [SheffieldRE@pacbell.net](mailto:SheffieldRE@pacbell.net)

Phone: (530) 666-5485 Fax: (530) 666-1244

Website: [www.Sheffield-RealEstate.com](http://www.Sheffield-RealEstate.com)

Listing Agent: **Wally Sheffield, Broker**

E-Mail: [WallySheffield@pacbell.net](mailto:WallySheffield@pacbell.net)

DRE Lic: 01329897

The information contained herein has been obtained from sources we deem reliable. We cannot, however, assume responsibility for its accuracy.

# FOR SALE

**1101 Lincoln Avenue • Woodland, CA**  
**26,607± Sq. Ft. on 0.61± Acres**



**Many Possibilities!**  
**\$645,000.00**

## **SHEFFIELD REAL ESTATE**

### **COMMERCIAL/INDUSTRIAL PROPERTIES**

20 N. East Street, Suite 101, Woodland, CA 95776

E-Mail: [SheffieldRE@pacbell.net](mailto:SheffieldRE@pacbell.net)

Phone: (530) 666-5485 Fax: (530) 666-1244

Website: [www.Sheffield-RealEstate.com](http://www.Sheffield-RealEstate.com)

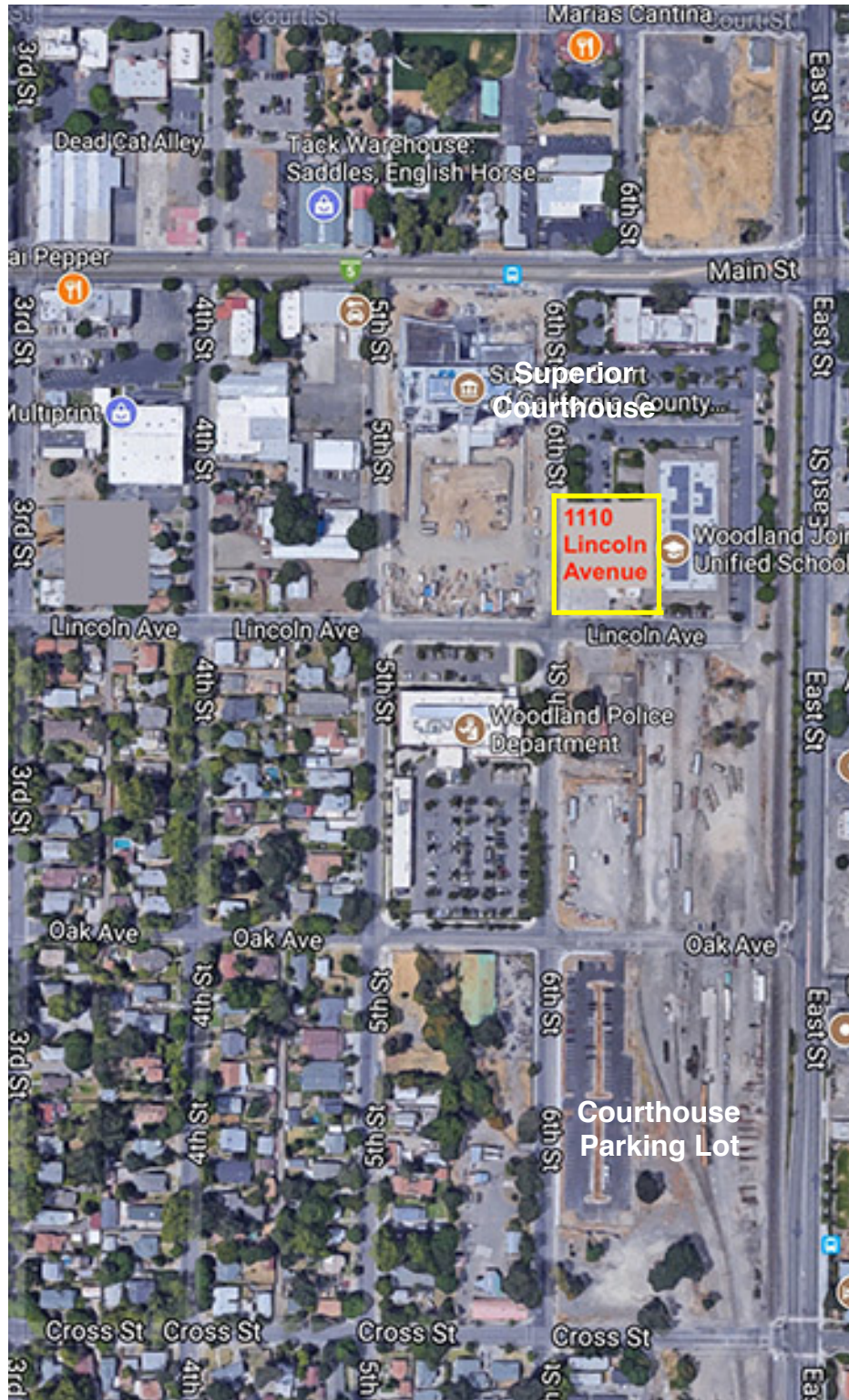
Listing Agent: **Wally Sheffield, Broker**

E-Mail: [wallysheffield@pacbell.net](mailto:wallysheffield@pacbell.net)

DRE Lic: 01329897

The information contained herein has been obtained from sources we deem reliable. We cannot, however, assume responsibility for its accuracy.

# 1101 Lincoln Avenue • Woodland, CA



## SHEFFIELD REAL ESTATE

### COMMERCIAL/INDUSTRIAL PROPERTIES

20 N. East Street, Suite 101, Woodland, CA 95776

E-Mail: [SheffieldRE@pacbell.net](mailto:SheffieldRE@pacbell.net)

Phone: (530) 666-5485 Fax: (530) 666-1244

Website: [www.Sheffield-RealEstate.com](http://www.Sheffield-RealEstate.com)

Listing Agent: **Wally Sheffield, Broker**

E-Mail: [wallysheffield@pacbell.net](mailto:wallysheffield@pacbell.net)

DRE Lic: 01329897

The information contained herein has been obtained from sources we deem reliable. We cannot, however, assume responsibility for its accuracy.